

# Education & Awareness Committee Information

## Social Media and Conference Updates

### January 2019

#### Conference Information:

If you would like to volunteer please visit <https://www.surveymonkey.com/r/2019-IKC-Conferences> or contact Connie Satzler

#### Kansas Governor's Public Health Conference, April 3, Manhattan

- Register before March 13<sup>th</sup>
- Volunteers Needed  
April 3: 6am-8am Set-up  
8am-4pm 5:00pm Exhibits open

#### KS American Academy of Pediatrics Conference, April 5, Salina

- Register before March 1st
- Volunteers Needed  
April 5:

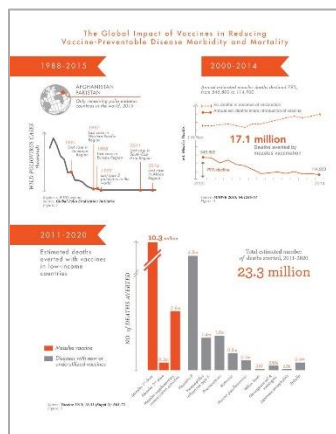
#### Facebook: [www.facebook.com/ImmunizeKansasCoalition/](http://www.facebook.com/ImmunizeKansasCoalition/)

Likes: **276** (Gained +106 since January 2018)  
Recent popular posts: **Reached 934 people, 8 Shares, 1 Like**

*"It's still not too late to get a flu vaccine! Flu can cause serious illness, hospitalization and even death for people of all ages. Learn more at [www.vaccinateyourfamily.org/vaccines-diseases/](http://www.vaccinateyourfamily.org/vaccines-diseases/)!"*

#### Twitter: @ImmKSCoalition, <https://twitter.com/ImmKSCoalition>

Followers: 49



#### Recent Top Tweets

**2,477 impressions** "Look at the global impact of vaccines in reducing vaccine-preventable disease morbidity and mortality! #VaccinesWork [tinyurl.com/yca9b6rm](http://tinyurl.com/yca9b6rm) [pic.twitter.com/J26Ys2XCKR](https://pic.twitter.com/J26Ys2XCKR)"

**2,779 impressions** "Nov 11 marks 100 years since Armistice Day (Veterans Day). Also 100 yrs ago, the 1918 Flu Pandemic impacted many worldwide, with some of the first reported cases at Ft. Riley. KS' flu response in the fall of 1918 was led by Dr. Crumbine. [bit.ly/2qO97b7](http://bit.ly/2qO97b7) #FightFlu [pic.twitter.com/1qS91CnhYr](https://pic.twitter.com/1qS91CnhYr)"



#### IKC LinkedIn [www.linkedin.com/company/immunize-kansas-coalition/](http://www.linkedin.com/company/immunize-kansas-coalition/) (Launched 5/3/18)

User: Immunize Kansas Coalition

Followers: 8

Adding to LinkedIn Profile: To add IKC to your experience, Go to your profile, Click "Add Profile Section" under your name, Choose "Add Volunteer Experience."